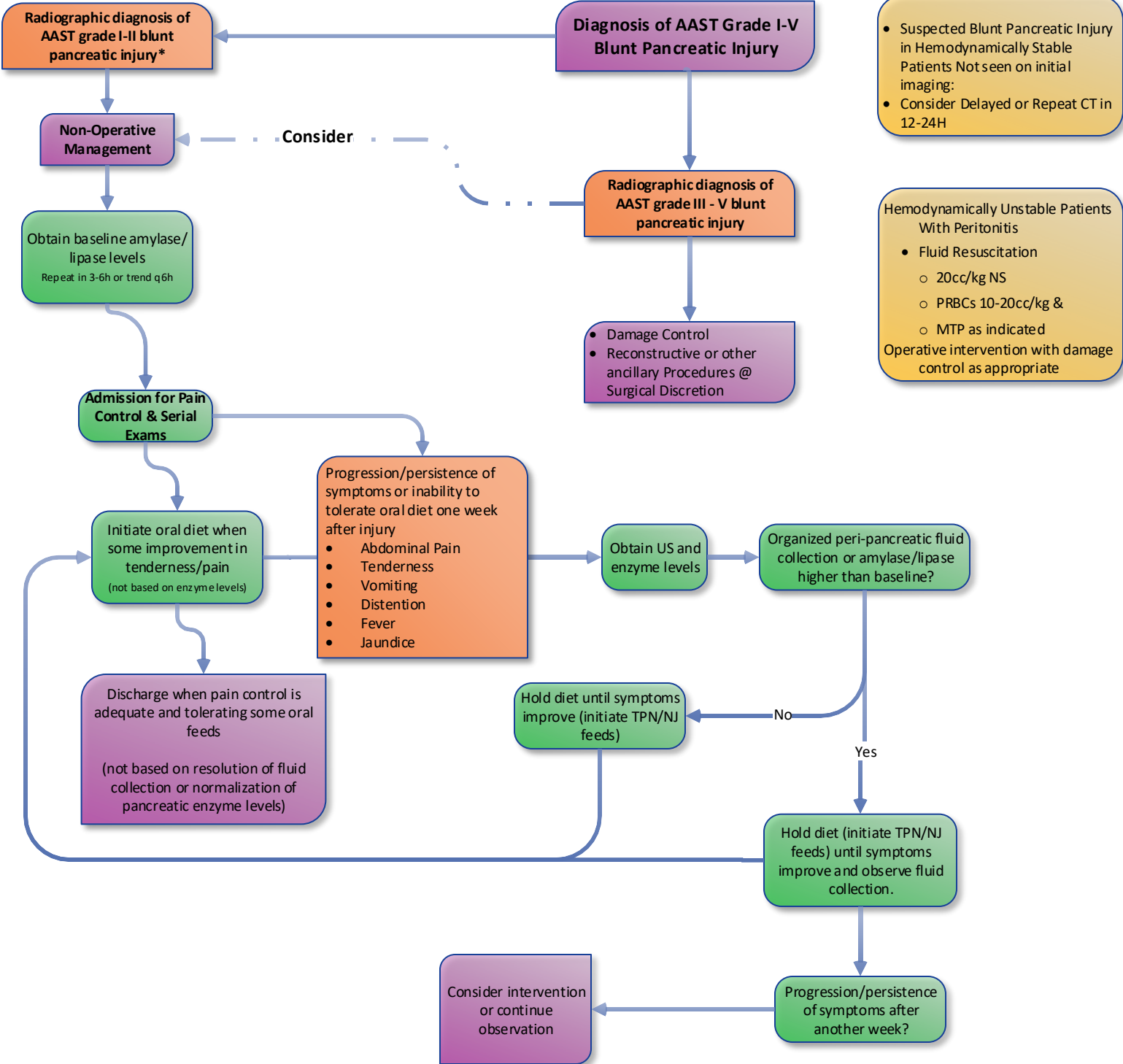


Management of Blunt Pancreatic Injury



• Suspected Blunt Pancreatic Injury in Hemodynamically Stable Patients Not seen on initial imaging:
• Consider Delayed or Repeat CT in 12-24H

Hemodynamically Unstable Patients With Peritonitis

- Fluid Resuscitation
 - 20cc/kg NS
 - PRBCs 10-20cc/kg &
 - MTP as indicated

Operative intervention with damage control as appropriate

