

This data is related to outcomes of viral testing at Dell Children’s Medical Center, ED and inpatient. It allows us to track the prevailing viruses in our community.

Please be aware of current circulating enterovirus/rhinovirus and mycoplasma pneumoniae as we get into the warmer months. There have been no flu or RSV cases for over 1 month. We will continue to monitor, but will resume these graphs when cases rise again in the fall. PCR testing is much more sensitive than POC testing as evidenced by the RSV and Influenza comparison between the two types of testing.

Of note, we have seen a dramatic decrease in the overall number of patients tested using the Respiratory Biofire PCR Panel. This may be a reflection of decreased ED visits due to the current COVID-19 situation, or a decrease in the presentation of respiratory illness.

Novel coronavirus 2019/CoVID-19 (SARS-CoV-2) cases continue to rise globally and locally. As of 6/22/20:

	Cases Confirmed	Deaths
Worldwide	8,985,016	468,881
U.S.	2,281,069	119,997
Texas	111,601	2182
Austin (tri-county)	8649	146

These numbers are constantly changing! You can follow updates at the following links:

Clinical criteria for evaluation:

<https://www.cdc.gov/coronavirus/2019-nCoV/hcp/clinical-criteria.html>

<https://www.cdc.gov/coronavirus/2019-nCoV/summary.html>

<https://emergency.cdc.gov/han/2020/han00428.asp>

https://www.who.int/docs/default-source/coronaviruse/situation-reports/20200301-sitrep-4-1-covid-19.pdf?sfvrsn=6768306d_2

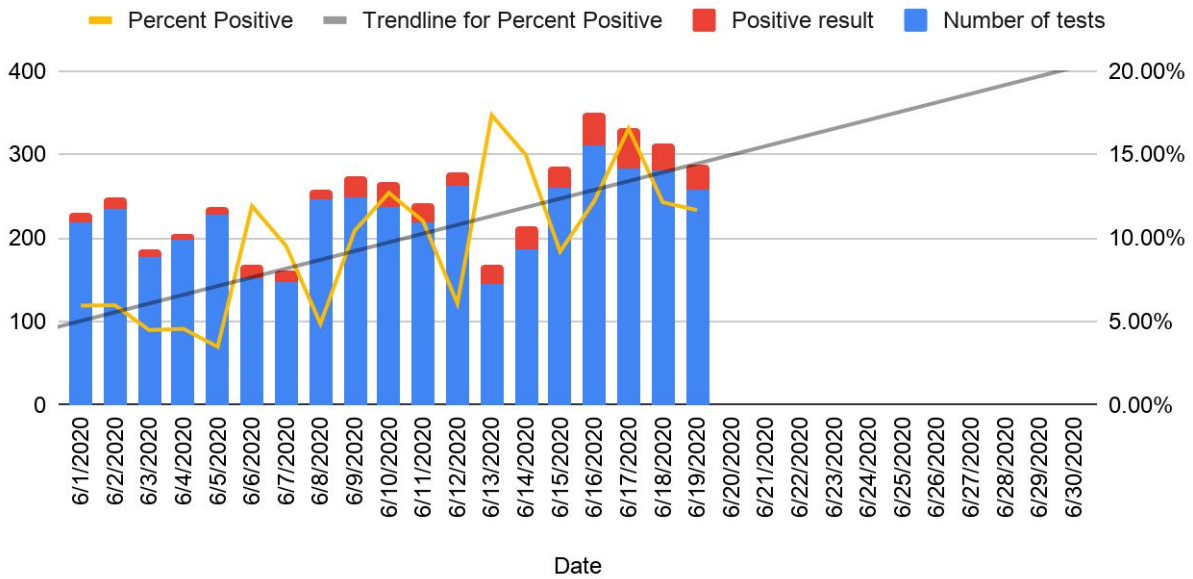
<https://gisanddata.maps.arcgis.com/apps/opsdashboard/index.html#/bda7594740fd40299423467b48e9ecf6>

<https://www.dshs.state.tx.us/coronavirus/>

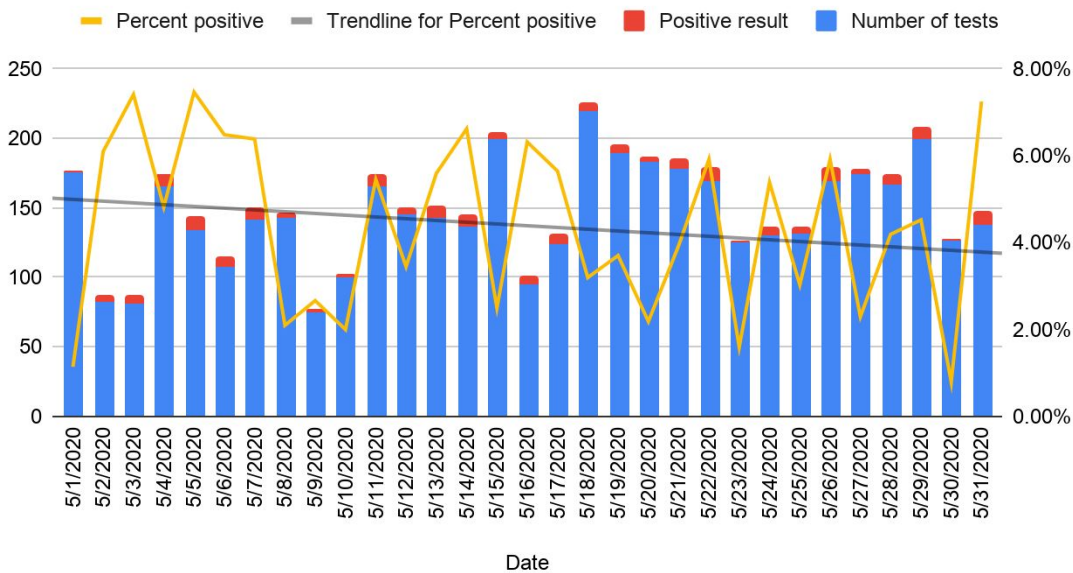
The COVID-19 graphs below represent testing at multiple Seton hospitals. At DCMC Since June 1, 791 tests were performed and 15 have been positive.

Daily COVID Testing for **AUSTIN AREA SETON** Hospitals

COVID-19 Testing June: (418/4290 positive 9.74%)



COVID-19 Testing May: (189/4483 positive 4.22%)



COVID-19 Testing April: (112/1580 positive 7.1%)

